



**HEBE RUBBER
PRODUCTS SDN. BHD.** (595021K)

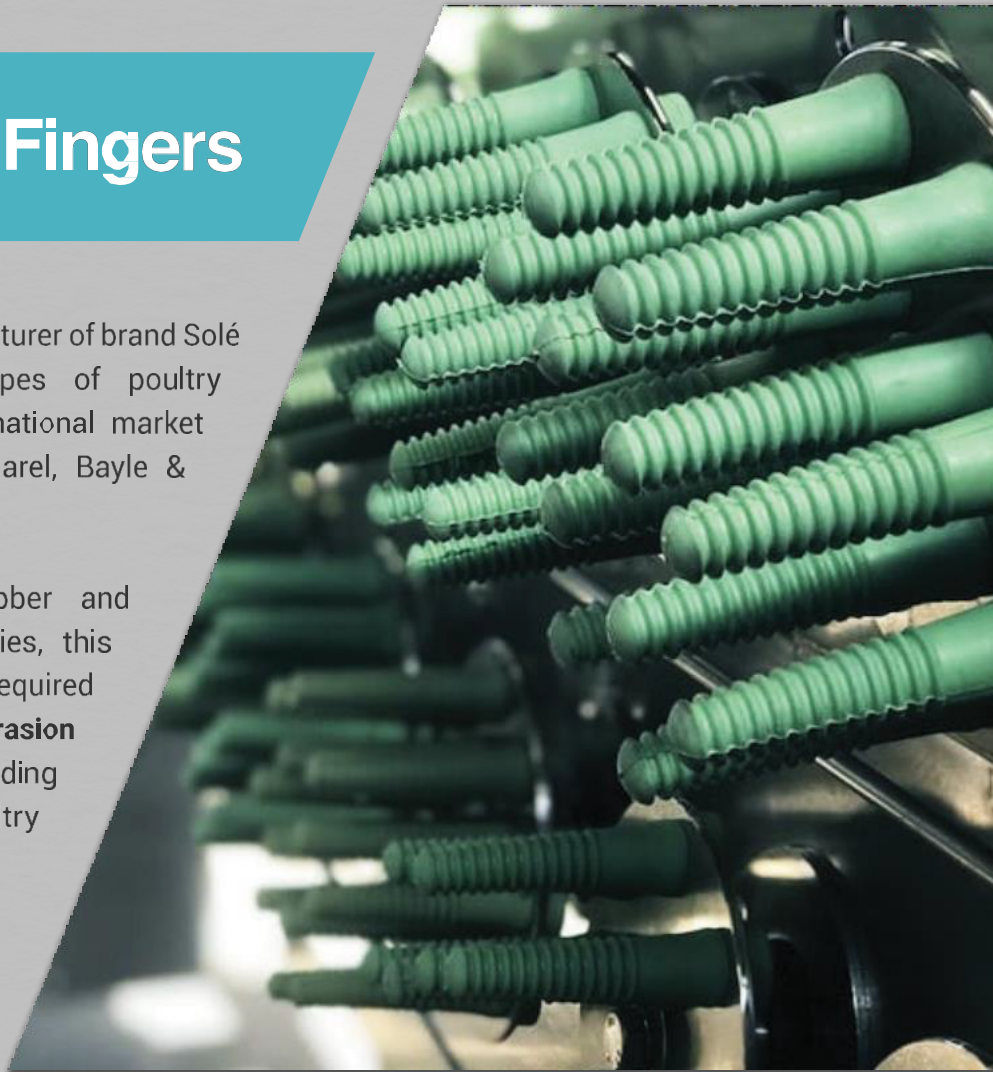
+6011 2797 0511
welwin@heberubber.com
www.heberubber.com

Rubber Picking Fingers

We are an established leading manufacturer of brand Solé rubber picking fingers for all types of poultry defeathering equipment in the international market such as Meyn, Linco, Foodmate, Marel, Bayle & Systemate.

By using high grade natural rubber and meticulous adherence to technicalities, this ensures our picking fingers meet the required **high tensile strength and good abrasion resistance** for today's highly demanding processes in every aspect of poultry production requirement.

Solé
Design to Perform



Our rubber picking fingers are **colour coded according to hardness for easy identification.**



Brown
SH 55+/-5



Green
SH 60+/-5



Red
SH 65+/-5



Hebe Rubber Products Sdn. Bhd.

No. 14, 1st Mile, Jalan Pandamar, Cempaka Emas Industrial Park, 42000 Pandamaran, Port Klang, Malaysia.



CODE 110

Use for removing poultry feathers, this plucker finger has a round design and delicate touch make it effective for picking gentle, small and medium birds (quail, chicken).

● SH 55+/-5 ● SH 60+/-5 ● SH 65+/-5

Fitted to MEYN | LINCO | DRUM machines



CODE 120

Use for depilating poultry feathers, this rubber finger has a solid round with a slightly thicker design make it effective for picking broilers' feather (duck, goose).

● SH 55+/-5 ● SH 60+/-5 ● SH 65+/-5

Fitted to MEYN | LINCO | DRUM machines



CODE 130

Use for poultry defeathering processing, this type plucker finger has a round head and gentle ribs enable delicate contact with bird skin. It gives optimum performance and long durability.

● SH 55+/-5 ● SH 60+/-5 ● SH 65+/-5

Fitted to BAYLE | LINCO | MEYN
| SYSTEMATE equipment



CODE 140

Solid round finger use for removing poultry feathers, this finger has a special thick, with round body for counter-rotating machines like poultry slaughter machinery. Excellent performance for picking processing bigger birds and turkey without damaging the bird's skin. It is also used for poultry gizzard processing and poultry feet processing.

● SH 55+/-5 ● SH 60+/-5 ● SH 65+/-5

Fitted to STORK | SYSTEMATE
equipment



CODE 144

Use for removing poultry feathers, this is a special finger for counter-rotating machines. It is excellent for picking without damaging the bird's skin.

● SH 55+/-5 ● SH 60+/-5 ● SH 65+/-5

Fitted to LINCO | SYSTEMATE
| MEYN machines

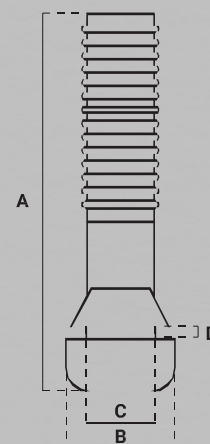
Product Specifications:

Code	A _{mm.}	B _{mm.}	C _{mm.}	D _{mm.}	QTY. PER BOX	BOX WGT. Kg.
110	95	27	16	1.5	500	15
120	93	28	20	2	500	16
130	93	28	20	3	500	15
140	143	35	21*24	3	200	16
144	93	27	20	2	500	15

Pallet size: 110*11*135cm

Boxes per pallet: 30

1 pallet: 1.7m3





CODE 148

Design slightly longer than CODE 144 excellent feather picking processing without damaging the bird's skin.

● SH 55+/-5 ● SH 60+/-5 ● SH 65+/-5

Fitted to LINCO | MEYN | SYTEMATE machines



CODE 150

The strong design on the beater part making it more efficient for high speed picking in heavy duty conditions. This finger type is good with high capacity feather removal processing automatic poultry slaughter machinery.

● SH 55+/-5 ● SH 60+/-5 ● SH 65+/-5

Fitted to LINCO | BAYLE | MEYN | SYSTEMATE machines



CODE 160

A long, very soft and flexible, thin finger with rounded spirals on one side. It gives excellent and accurate bird cleaning performance.

● SH 55+/-5 ● SH 60+/-5 ● SH 65+/-5

Fitted to CANTRELL | MEYN equipment



CODE 170

Design for large broilers and small turkey providing excellent picking capacity.

● SH 55+/-5 ● SH 60+/-5 ● SH 65+/-5

Fitted to STORK machine



CODE 847

The strong and oval head design give it a better hold in the disk and more strength and hardness, ensuring excellent high speed picking in heavy duty conditions. This finger is suitable for STORK machinery.

● SH 55+/-5 ● SH 60+/-5 ● SH 65+/-5

Fitted to STORK machine

Product Specifications:

Code	A _{mm.}	B _{mm.}	C _{mm.}	D _{mm.}	QTY. PER BOX	BOX WGT. Kg.
148	95	28	21	2.7	500	16
150	93	27	20	2	500	16
160	142	28	18	6.5	400	14
170	105	31	23	2	400	16
847	95	28	21*23	2.5	500	16

Pallet size: 110*11*135cm

Boxes per pallet: 30

1 pallet: 1.7m3

